

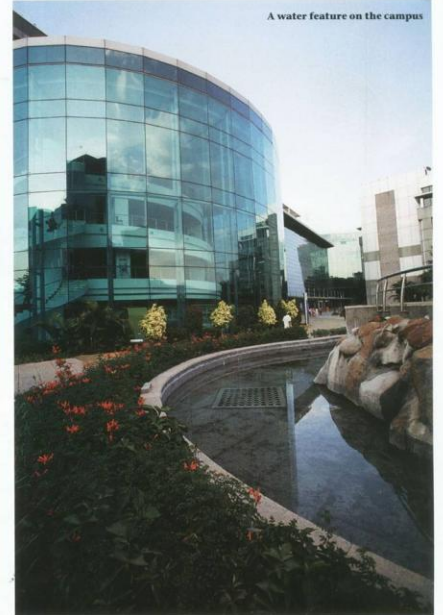
# Green tech

SAP Labs India's campus is unusually green for a technology company.

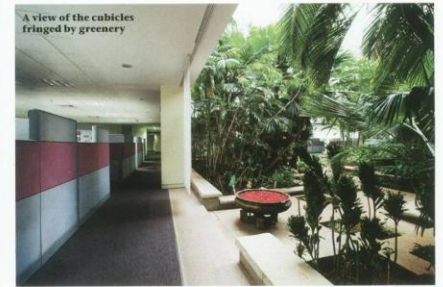
*Many* a times big companies talk about promoting green initiatives without actually applying it in their design concepts. SAP Labs India (SLI) however believes in the philosophy of "practice what you preach." SLI second largest research and development centre adheres to all the green design principles. Their Bengaluru office is spread over an area of roughly 600,000 sq. ft., retaining large span of naturally forested area for some rare birds and colourful lizards.



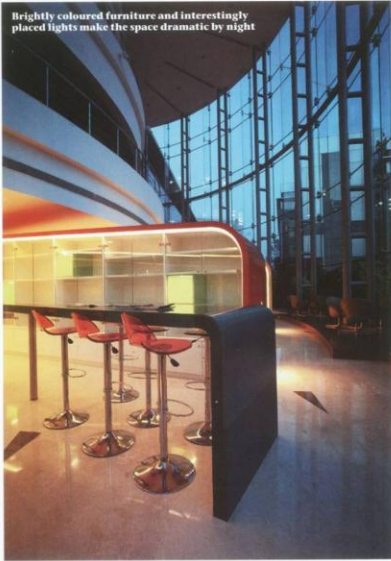
The façade of the SAP Labs India Building with a view of the manicured garden



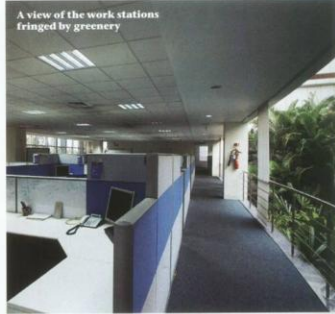
A water feature on the campus



A view of the cubicles fringed by greenery



Brightly coloured furniture and interestingly placed lights make the space dramatic by night



A view of the work stations fringed by greenery

The Campus was designed to reflect Indian cultural motifs and architectural elements. The principal philosophy, of course, was to bring the outside landscape into the interiors of the office. Hence came about the courtyard concept around which the entire campus design was evolved. With Germany at the forefront of the sustainable development movement, SAP desired that the campus reflect the highest concern for the environment. Therefore the design was created and materials carefully chosen keeping in mind the company's green initiative.



A view of the terrace and the glass panel roof



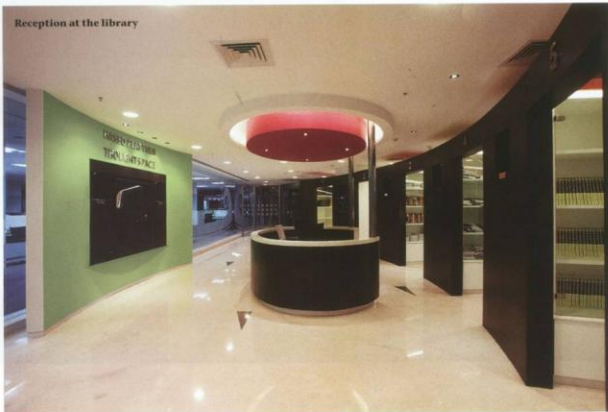
The high ceiling of the building allows you a view of the breakout areas from the top

In order to encourage a healthy lifestyle amongst the employees and stakeholders, SAP India follows a simple threefold policy — reducing energy and water consumption, recycling waste and providing environment-friendly facilities. The glass roofs in all the office buildings provide ample natural light during working hours. The user-friendly work environment with narrow floor plates maximizes daylight percolation and external views while the high performance double glazing systems, solar shading devices and over deck insulation ensures minimal heat gain through the building envelope. The result — a technology company whose interiors are unlike most other “cookie-cutter” offices.

With plants and green islands around every work area, every point in the office has access to greenery. Soft gurgling waterfalls interrupt the low



Work stations with a transparent glass walls facing the garden



Reception at the library



The lobby at the main entrance

hum of conversation in offices. While meeting rooms and conference rooms have the furniture and fittings that lend it gravitas, the break out areas are something else.

On the ground level of the building, a large wall with cartoons arrests people's attention. You could spend a few minutes reading conversation bubbles and then return for more the next few months to find more caricatures on this panel. The cafeteria with bright coloured furniture arranged with four chairs per table, is like a coffee shop. Another breakout area in the new block, with carpeted floors and contemporary furniture looks like an airport lounge.

The interiors are a healthy mix of serious business-like areas and fun break-out spaces. For an office that is situated on the outskirts of Bengaluru, with few immediate spaces in the locality to walk to, SLI provides many islands of leisure.



The open-air food court.

The library with its double-height ceiling and a glass wall facing the landscaped area is a new-age cocoon of learning. Cozy corners with soft rugs at your feet make this an ideal space to retreat into for some quiet reading in the lunch break.

SLI also boasts of a creche for children of employees. The employees' opinion were taken into account while planning the creche, the kind of toys to be made available and the decor of the space.

While the space is well-equipped and interesting to the eye, it also has a stringent energy saving policy.

Several energy saving gadgets have been installed for high energy consumable equipments like chillers, lower rating AC units among others. Also, low energy efficient light fittings have managed to replace high energy lights like T5, and LED. The campus holds over 4,500 employees, each of whom are contributing in reducing the energy consumption by replacing end-user desktops with more energy-efficient laptops. All servers in the company are used on power-saving modes.

SLI is taking all steps to ensure that the campus conforms with all the regulatory pollution norms including the set-up of backup power diesel generators in the campus that are fitted with high-end scrubber systems. Clearly, SAP India has taken every small step to ensure a 'no-wastage' policy. The flushing systems are sensor based so as to optimize water consumption and the recently introduced water less urinals are another way to ensure there is no wastage of water.

All the sewage is treated within the campus and excess water is treated and reused. The presence of an in-house organic waste converter unit where all dry and organic wastes are converted into manure and are used for landscape maintenance adding to the eco-friendliness of this campus.

In addition to the manner in which the campus is designed, no stone is left unturned to ensure an out an out green set-up. The SAP Labs India Campus is a timeless, eco-sensitive and contextual development and provides a unique work environment wherein a seamless continuity between the inside and outside is achieved.

Text: **Divya Menon and Anupama Bijur**  
Photographs: **Sandesh Ravikumar**



The break-out area with a large caricature wall



An atrium